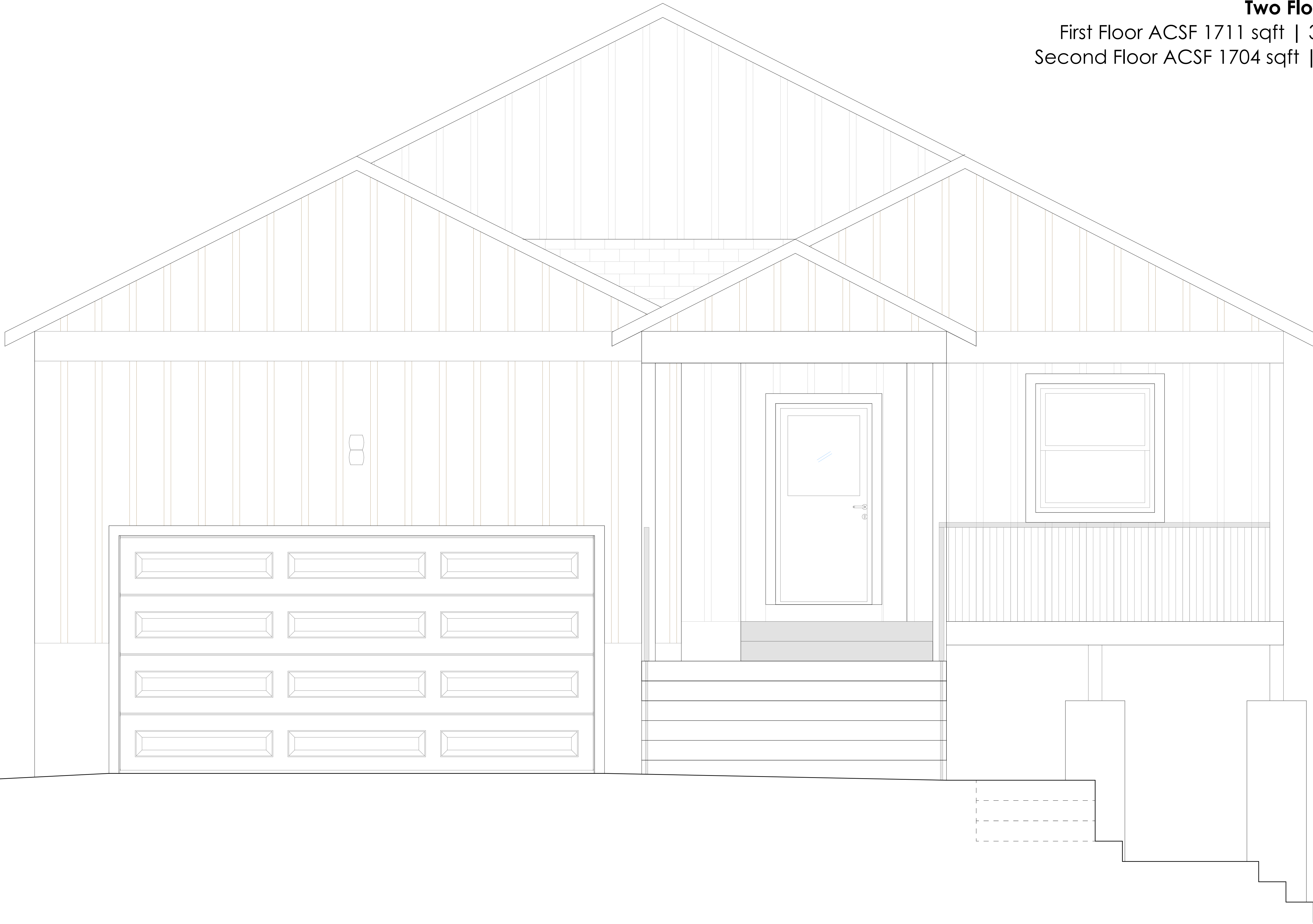


Two Floors | Two-Family Home

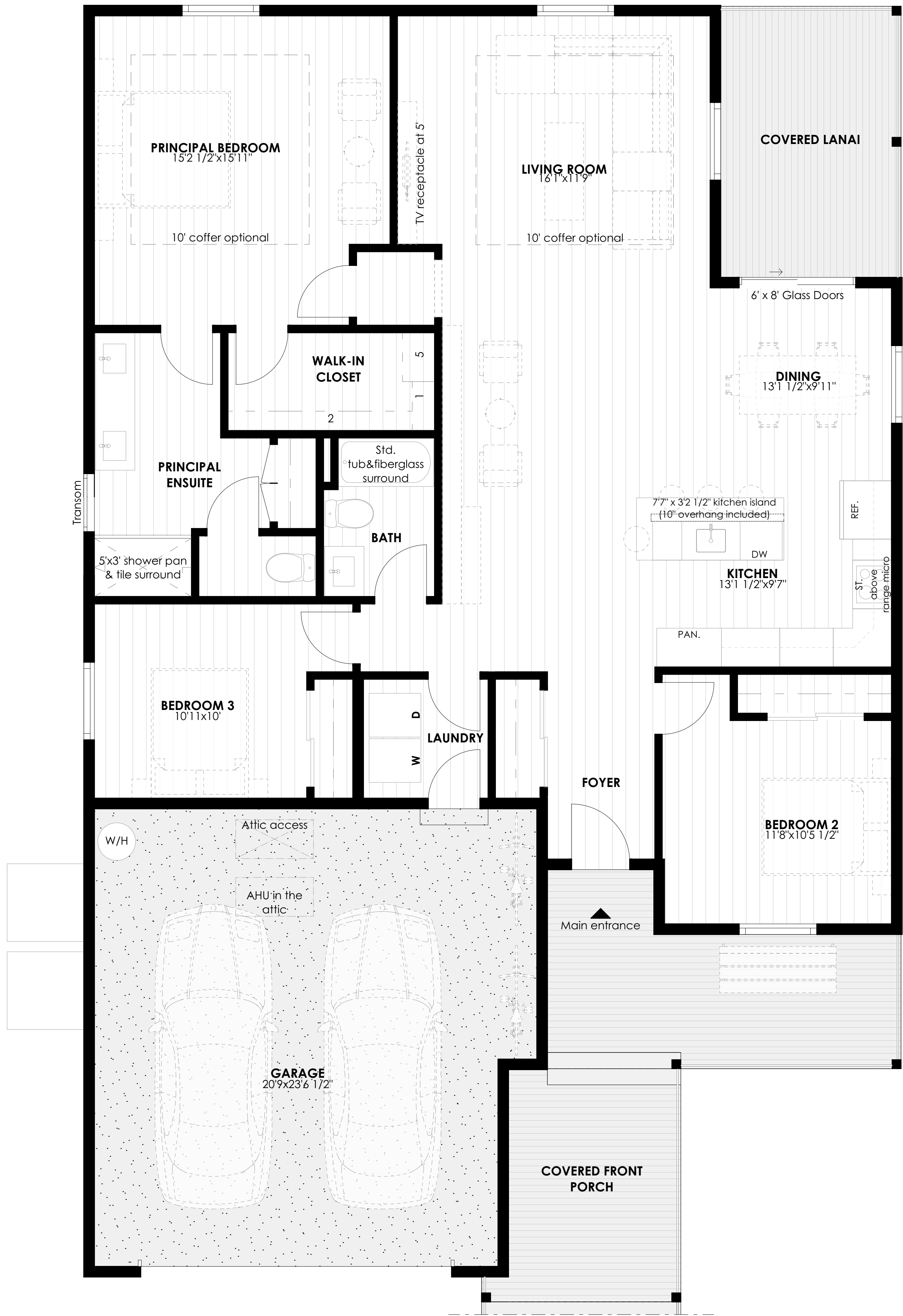
First Floor ACSF 1711 sqft | 3 BED | 2 BATH | 2 CAR

Second Floor ACSF 1704 sqft | 2 BED+DEN | 1.5 BATH



UPPER-LEVEL UNIT FLOOR PLAN – Base Design

The PINE SWOB



AREA SUMMARY

Main Floor ACSF: 1711 sqft
Basement Floor ACSF: 1704 sqft
Total ACSF: 3,415 sqft
Garage: 551 sqft
Entry: 252 sqft
Upstairs Lanai: 130 sqft
Downstairs Lanai: 130 sqft
Gross SF: 4,478 sqft

FLOORING LEGEND

Vinyl
Bare Concrete
Wood Deck

All solid line furniture to be provided by builder/vendor.

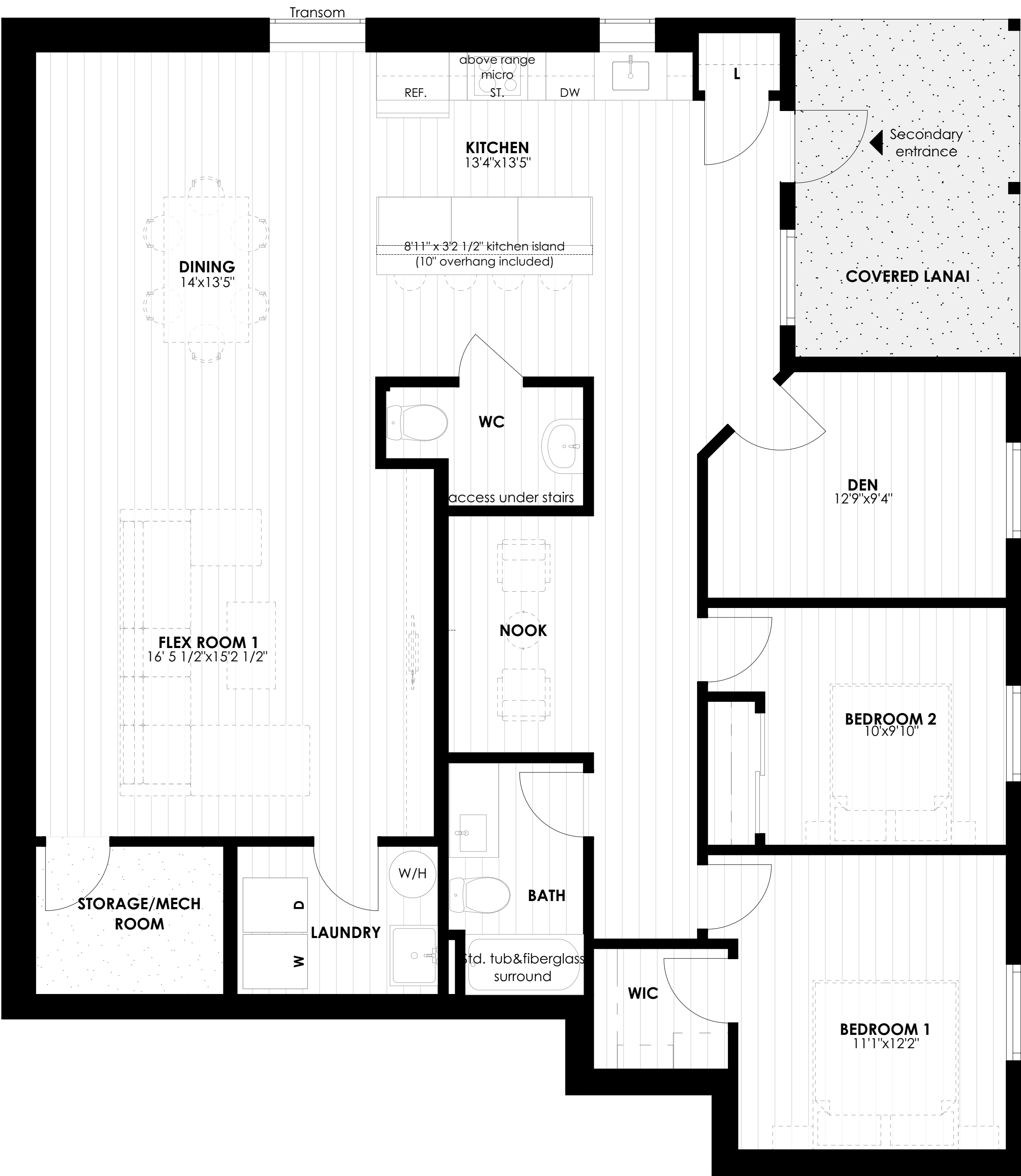
Dashed line furniture will **not** be provided by builder/vendor.



Disclaimer: Renderings are the artist's concept and may show upgraded or optional features not included with the standard design. The floor plan may be mirrored and purchaser agrees to accept the same. Steps and porches may vary at any exterior entrances due to grading variance. Dimensions, specifications, and architectural detailing are subject to minor modifications. Indicated square footage may vary, and may include open-to-above or open-to-below space. The final location of the sump pump is based on site conditions, building code, and zoning. Roofline and adjoining model types may vary due to siting. E. & O.E. APRIL 2025
ORAL REPRESENTATIONS CANNOT BE RELIED UPON AS CORRECTLY STATING REPRESENTATIONS OF THE DEVELOPER. FOR CORRECT REPRESENTATIONS, MAKE REFERENCE TO HIS BROCHURE AND TO THE DOCUMENTS REQUIRED BY SECTION 718.503, FLORIDA STATUTES, TO BE FURNISHED BY A DEVELOPER TO A BUYER OR LESSEE. Catana Construction Inc. reserves the right to alter home specifications, options, or prices without notice or obligation. Nothing herein shall constitute an offer to sell or a solicitation of offers to buy in states in which such offers or solicitations cannot be made; prices and availability are subject to change.



CATANA HOMES



AREA SUMMARY

Main Floor ACSF: 1711 sqft
Basement Floor ACSF: 1704 sqft
Total ACSF: 3,415 sqft
Garage: 551 sqft
Entry: 252 sqft
Upstairs Lanai: 130 sqft
Downstairs Lanai: 130 sqft
Gross SF: 4,478 sqft

FLOORING LEGEND

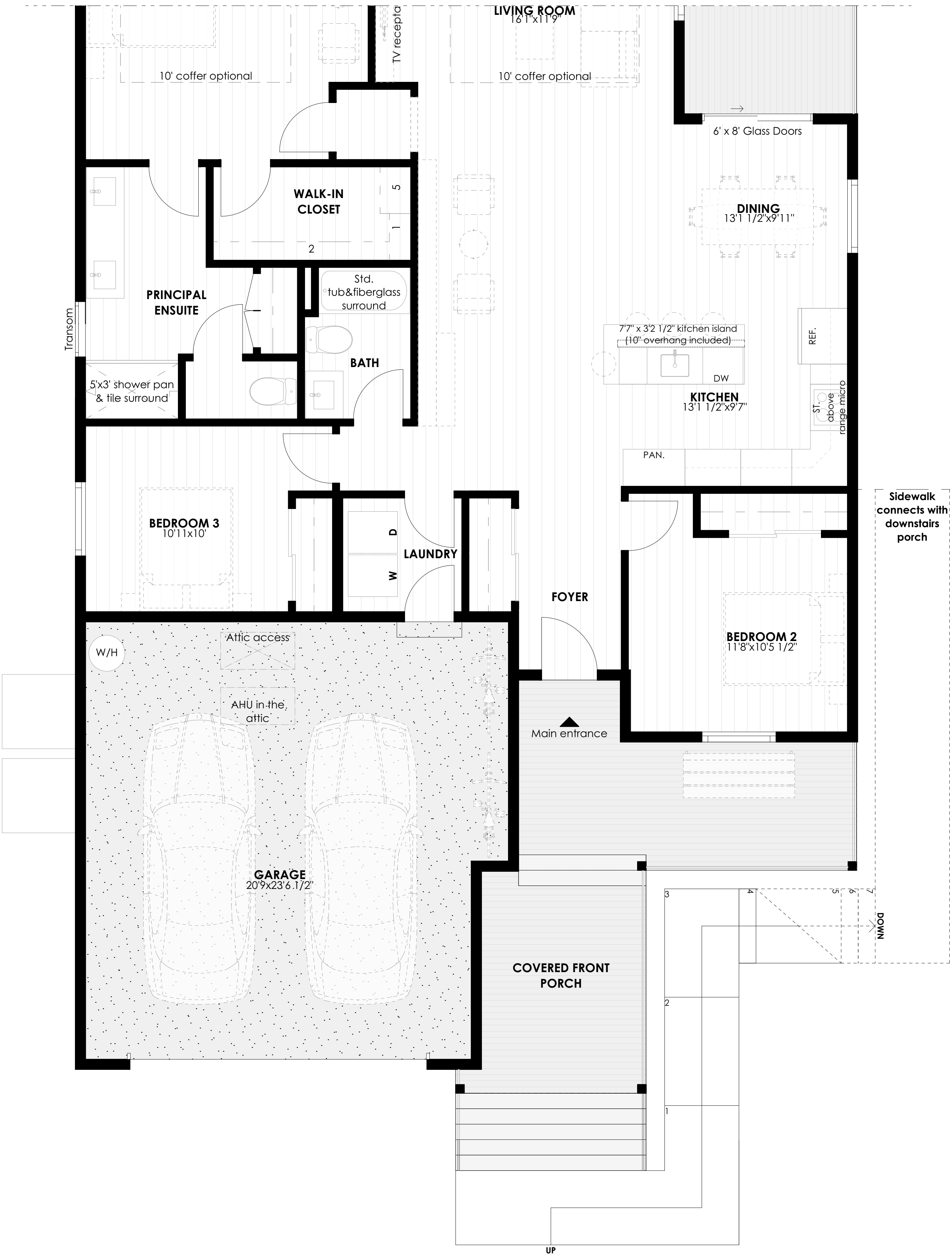
Vinyl
Bare Concrete
Wood Deck

All solid line furniture to be provided by builder/vendor.

Dashed line furniture will **not** be provided by builder/vendor.



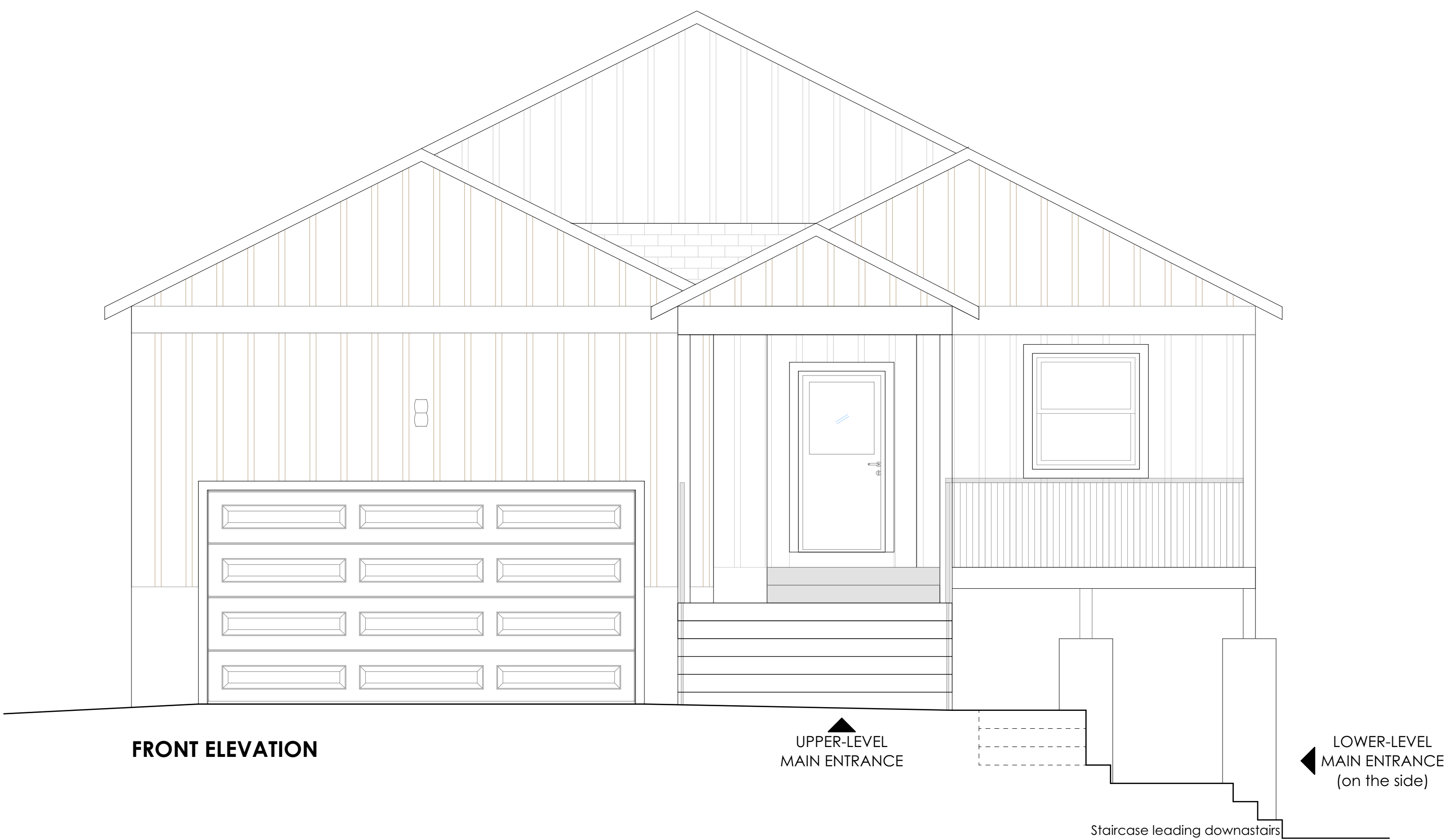
Exterior sidewalk to connect the downstairs porch with the main level.



Disclaimer: Renderings are the artist's concept and may show upgraded or optional features not included with the standard design. The floor plan may be mirrored and purchaser agrees to accept the same. Steps and porches may vary at any exterior entrances due to grading variance. Dimensions, specifications, and architectural detailing are subject to minor modifications. Indicated square footage may vary, and may include open-to-above or open-to-below space. The final location of the sump pump is based on site conditions, building code, and zoning. Roofline and adjoining model types may vary due to siting. E. & O.E. APRIL 2025
ORAL REPRESENTATIONS CANNOT BE RELIED UPON AS CORRECTLY STATING REPRESENTATIONS OF THE DEVELOPER. FOR CORRECT REPRESENTATIONS, MAKE REFERENCE TO HIS BROCHURE AND TO THE DOCUMENTS REQUIRED BY SECTION 718.503, FLORIDA STATUTES, TO BE FURNISHED BY A DEVELOPER TO A BUYER OR LESSEE. Catana Construction Inc. reserves the right to alter home specifications, options, or prices without notice or obligation. Nothing herein shall constitute an offer to sell or a solicitation of offers to buy in states in which such offers or solicitations cannot be made; prices and availability are subject to change.



Vertical Split Duplex - Unit Entrance Breakdown



FRONT RENDERING – Base Design

The PINE SWOB

Two Floors | Two-Family Home
First Floor ACSF 1711 sqft | 3 BED | 2 BATH | 2 CAR
Second Floor ACSF 1704 sqft | 2 BED + DEN | 1.5 BATH



Disclaimer: Renderings are the artist's concept and may show upgraded or optional features not included with the standard design. The floor plan may be mirrored and purchaser agrees to accept the same. Steps and porches may vary at any exterior entrances due to grading variance. Dimensions, specifications, and architectural detailing are subject to minor modifications. Indicated square footage may vary, and may include open-to-above or open-to-below space. The final location of the sump pump is based on site conditions, building code, and zoning. Roofline and adjoining model types may vary due to siting. E. & O.E. APRIL 2025
ORAL REPRESENTATIONS CANNOT BE RELIED UPON AS CORRECTLY STATING REPRESENTATIONS OF THE DEVELOPER. FOR CORRECT REPRESENTATIONS, MAKE REFERENCE TO HIS BROCHURE AND TO THE DOCUMENTS REQUIRED BY SECTION 718.503, FLORIDA STATUTES, TO BE FURNISHED BY A DEVELOPER TO A BUYER OR LESSEE. Catana Construction Inc. reserves the right to alter home specifications, options, or prices without notice or obligation. Nothing herein shall constitute an offer to sell or a solicitation of offers to buy in states in which such offers or solicitations cannot be made; prices and availability are subject to change.



CATANA HOMES