

FRONT FACADE

The MAPLE (stepped)

Two floors | Attached Two-Family Home (Duplex)
ACSF 1,349 SQFT | 3 BED | 2.5 BATH | 1 CAR



Contact Info: +1 (828) 523-1588 / info@catana-homes.com

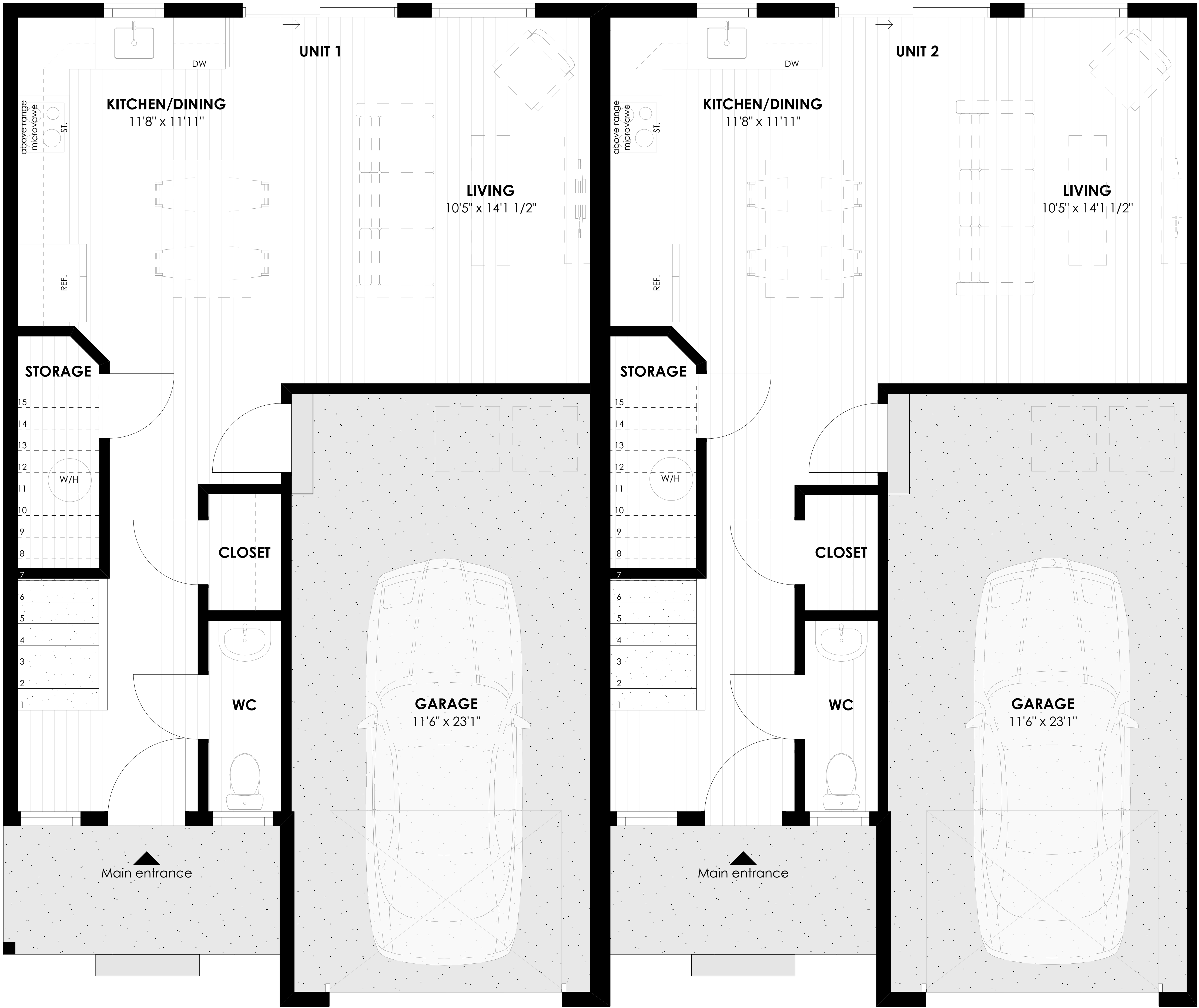


CATANA HOMES

Disclaimer: Renderings are the artist's concept and may show upgraded or optional features not included with the standard design. The floor plan may be mirrored and purchaser agrees to accept the same. Steps and porches may vary at any exterior entrances due to grading variance. Dimensions, specifications, and architectural detailing are subject to minor modifications. Indicated square footage may vary, and may include open-to-above or open-to-below space. The final location of the sump pump is based on site conditions, building code, and zoning. Roofline and adjoining model types may vary due to siting. E. & O.E. APRIL 2025
ORAL REPRESENTATIONS CANNOT BE RELIED UPON AS CORRECTLY STATING REPRESENTATIONS OF THE DEVELOPER. FOR CORRECT REPRESENTATIONS, MAKE REFERENCE TO HIS BROCHURE AND TO THE DOCUMENTS REQUIRED BY SECTION 718.503, FLORIDA STATUTES, TO BE FURNISHED BY A DEVELOPER TO A BUYER OR LESSEE. Catana Construction Inc. reserves the right to alter home specifications, options, or prices without notice or obligation. Nothing herein shall constitute an offer to sell or a solicitation of offers to buy in states in which such offers or solicitations cannot be made; prices and availability are subject to change.

FIRST FLOOR

The MAPLE



AREA SUMMARY per unit
First Floor ACSF: 531 sqft
Second Floor ACSF: 818 sqft
Garage: 287 sqft
Front Porch: 53 sqft
Total ACSF: 1,349 sqft
Gross SF: 1,689 sqft
FLOORING LEGEND
Vinyl Plank
Carpet
Bare Concrete

All solid line furniture to be provided by builder/vendor.

Dashed line furniture will not be provided by builder/vendor.

Contact Info:
+1 (828) 523-1588
info@catana-homes.com



Disclaimer: Renderings are the artist's concept and may show upgraded or optional features not included with the standard design. The floor plan may be mirrored and purchaser agrees to accept the same. Steps and porches may vary at any exterior entrances due to grading variance. Dimensions, specifications, and architectural detailing are subject to minor modifications. Indicated square footage may vary, and may include open-to-above or open-to-below space. The final location of the sump pump is based on site conditions, building code, and zoning. Roofline and adjoining model types may vary due to siting. E. & O.E. APRIL 2025
ORAL REPRESENTATIONS CANNOT BE RELIED UPON AS CORRECTLY STATING REPRESENTATIONS OF THE DEVELOPER. FOR CORRECT REPRESENTATIONS, MAKE REFERENCE TO HIS BROCHURE AND TO THE DOCUMENTS REQUIRED BY SECTION 718.503, FLORIDA STATUTES, TO BE FURNISHED BY A DEVELOPER TO A BUYER OR LESSEE. Catana Construction Inc. reserves the right to alter home specifications, options, or prices without notice or obligation. Nothing herein shall constitute an offer to sell or a solicitation of offers to buy in states in which such offers or solicitations cannot be made; prices and availability are subject to change.



SECOND FLOOR

The MAPLE



AREA SUMMARY per unit
First Floor ACSF: 531 sqft
Second Floor ACSF: 818 sqft
Garage: 287 sqft
Front Porch: 53 sqft
Total ACSF: 1,349 sqft
Gross SF: 1,689 sqft
FLOORING LEGEND
Vinyl Plank
Carpet
Bare Concrete
All solid line furniture to be provided by builder/vendor.
Dashed line furniture will not be provided by builder/vendor.

Contact Info:
+1 (828) 523-1588
info@catana-homes.com

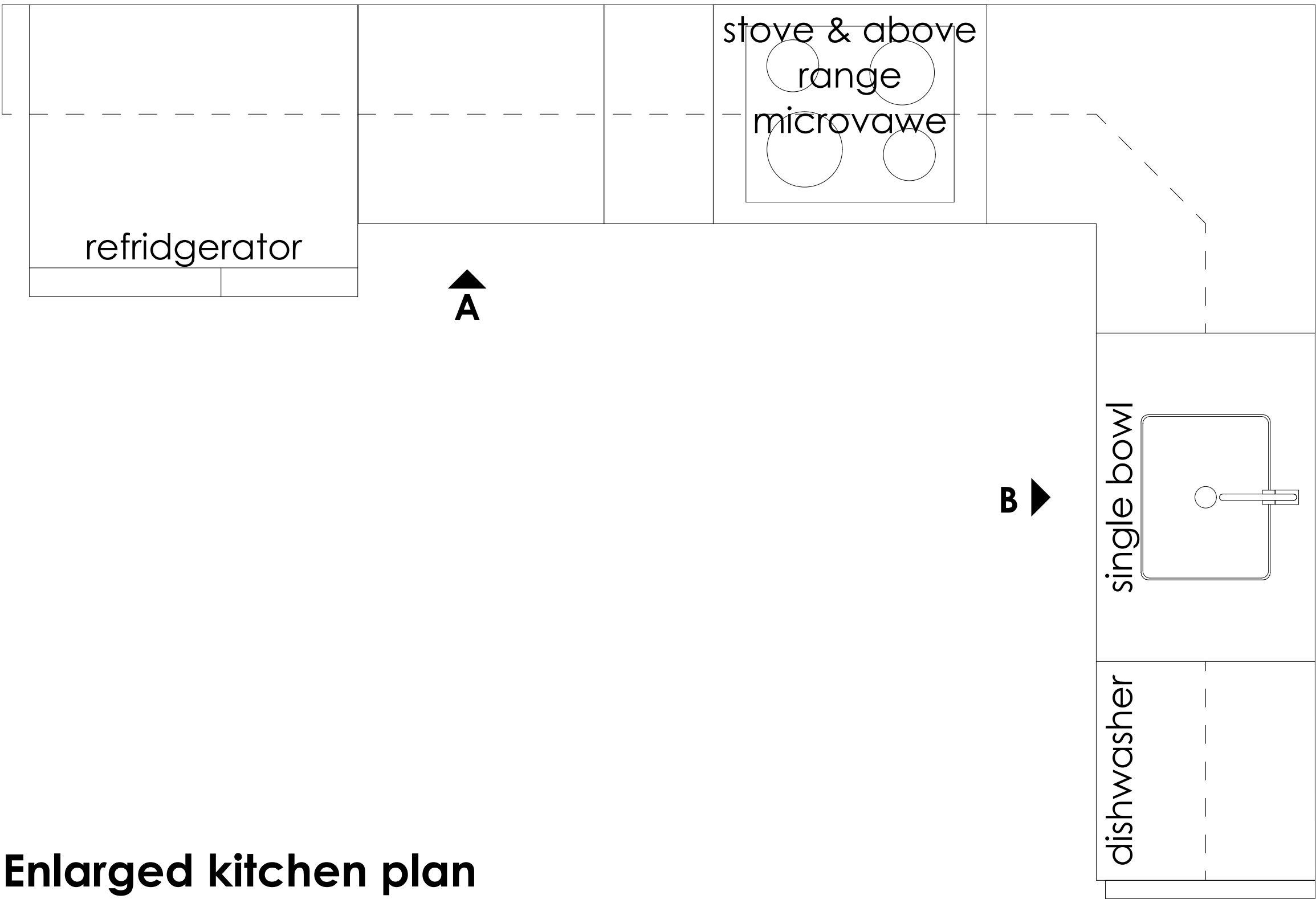


Disclaimer: Renderings are the artist's concept and may show upgraded or optional features not included with the standard design. The floor plan may be mirrored and purchaser agrees to accept the same. Steps and porches may vary at any exterior entrances due to grading variance. Dimensions, specifications, and architectural detailing are subject to minor modifications. Indicated square footage may vary, and may include open-to-above or open-to-below space. The final location of the sump pump is based on site conditions, building code, and zoning. Roofline and adjoining model types may vary due to siting. E. & O.E. APRIL 2025
ORAL REPRESENTATIONS CANNOT BE RELIED UPON AS CORRECTLY STATING REPRESENTATIONS OF THE DEVELOPER. FOR CORRECT REPRESENTATIONS, MAKE REFERENCE TO HIS BROCHURE AND TO THE DOCUMENTS REQUIRED BY SECTION 718.503, FLORIDA STATUTES, TO BE FURNISHED BY A DEVELOPER TO A BUYER OR LESSEE. Catana Construction Inc. reserves the right to alter home specifications, options, or prices without notice or obligation. Nothing herein shall constitute an offer to sell or a solicitation of offers to buy in states in which such offers or solicitations cannot be made; prices and availability are subject to change.

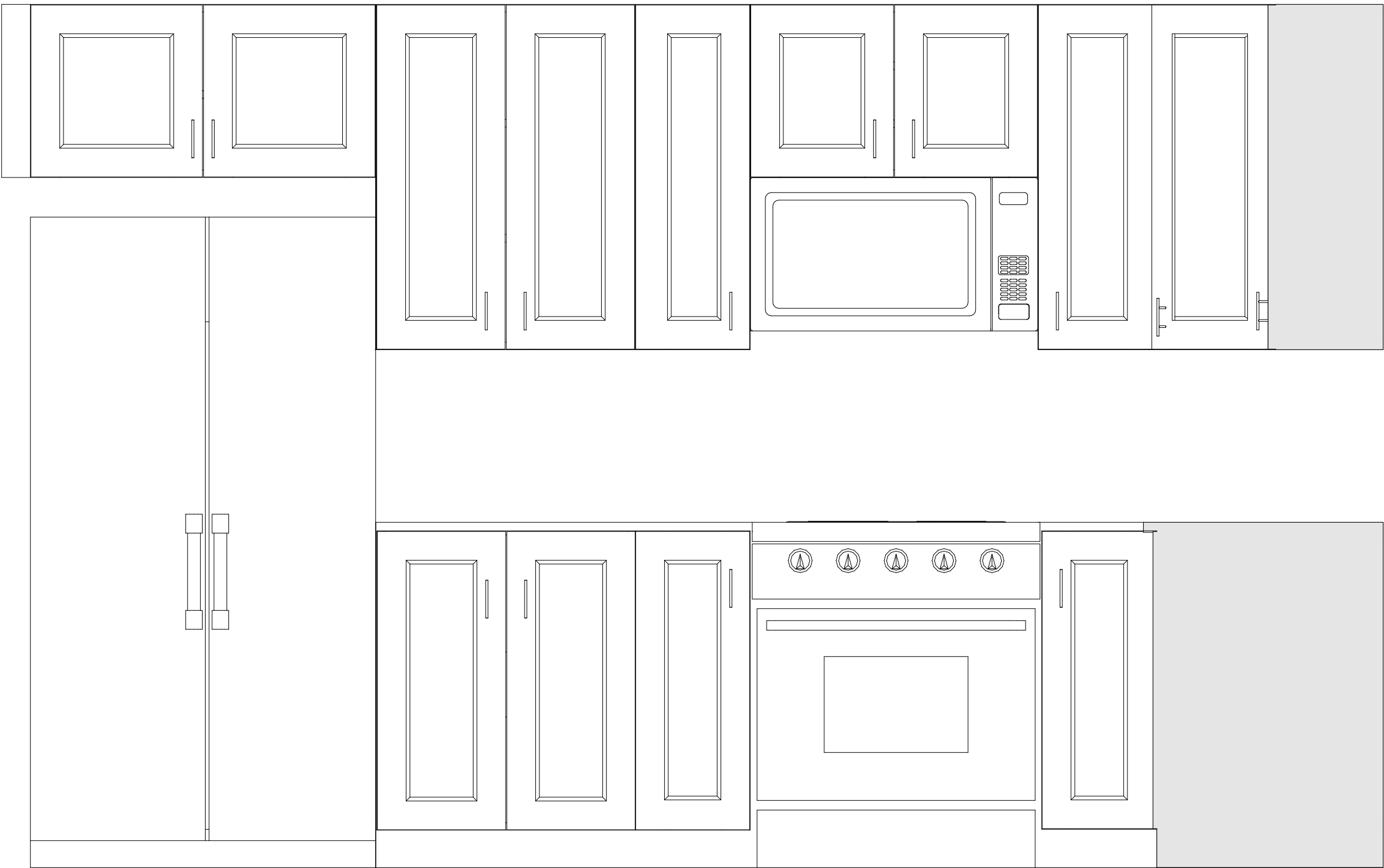


CABINET VIEWS

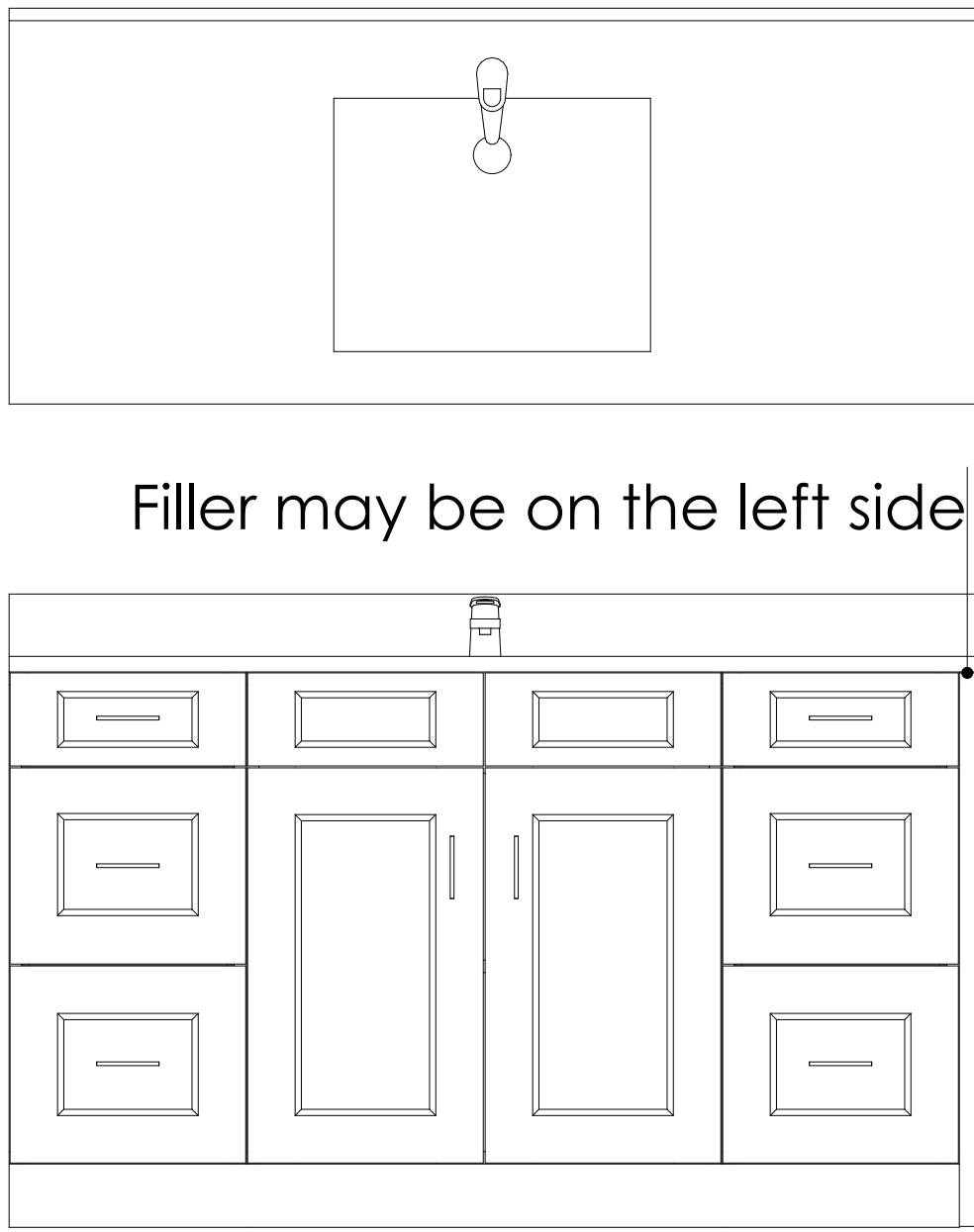
The MAPLE



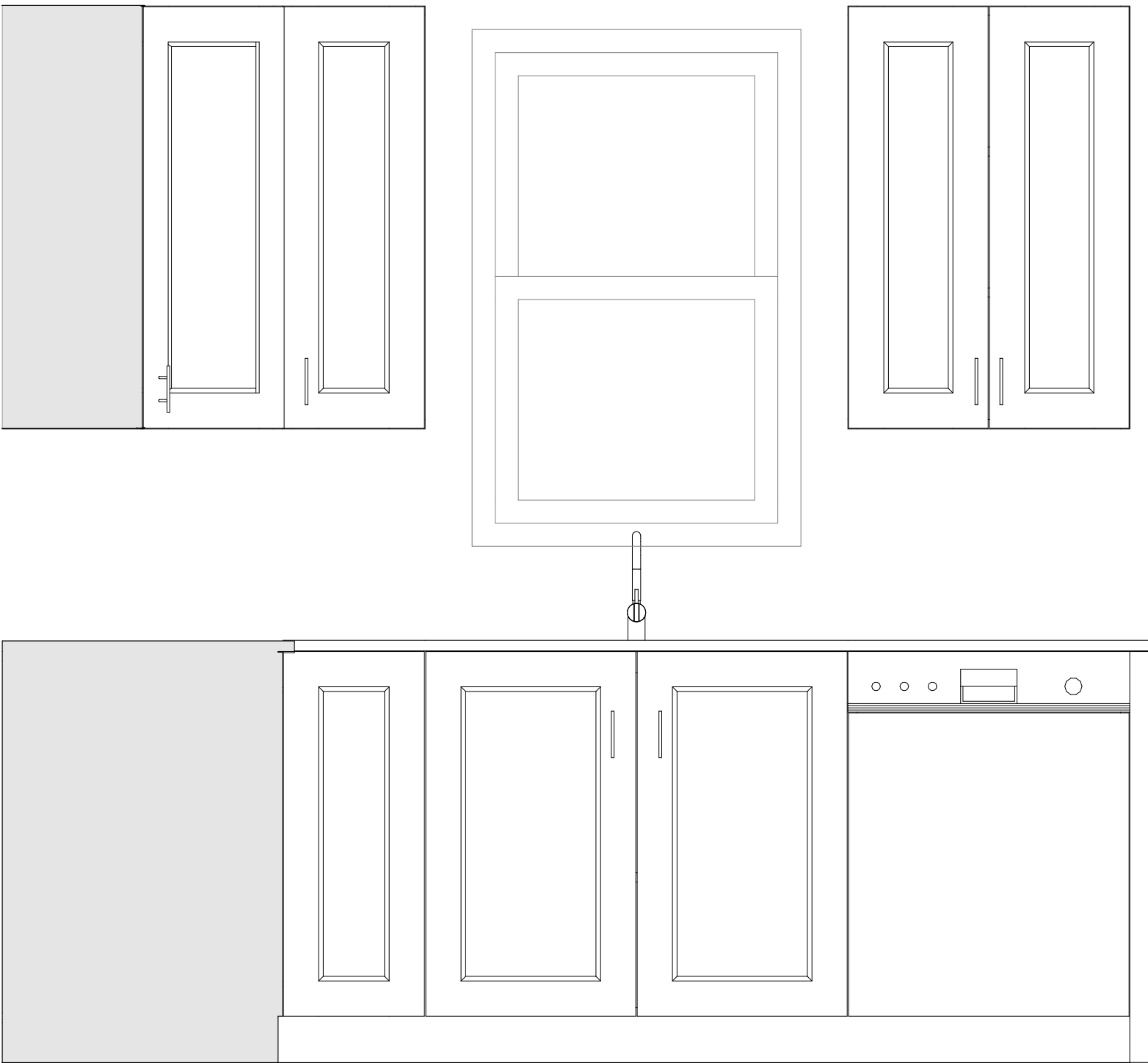
Enlarged kitchen plan



View A

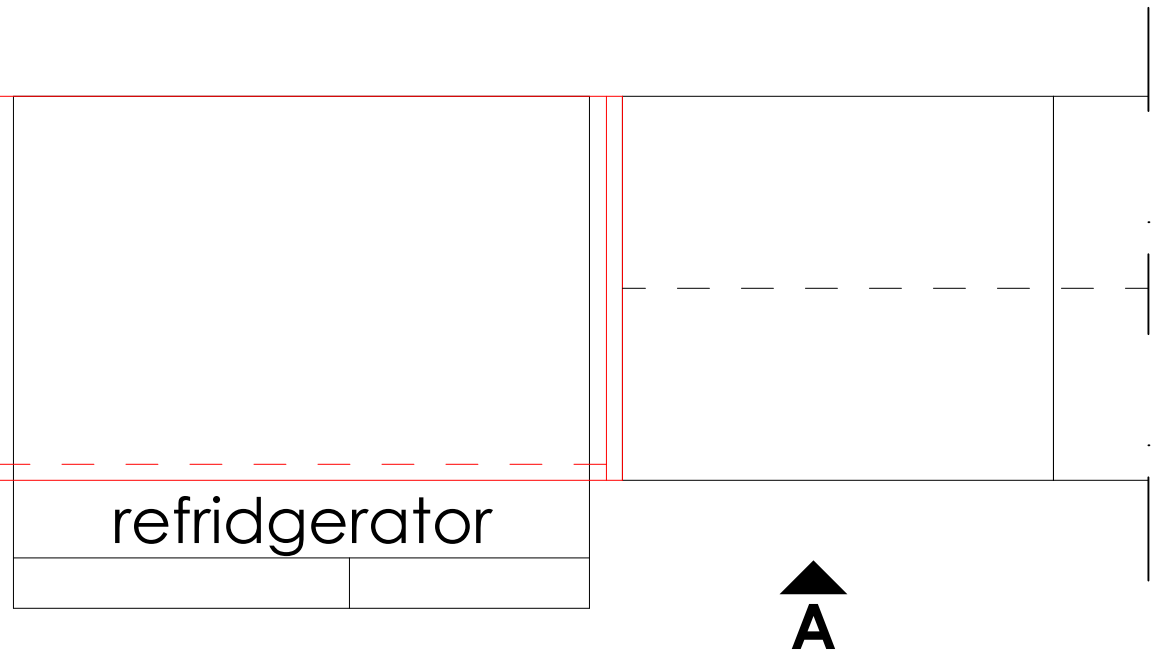


Bathroom(s)

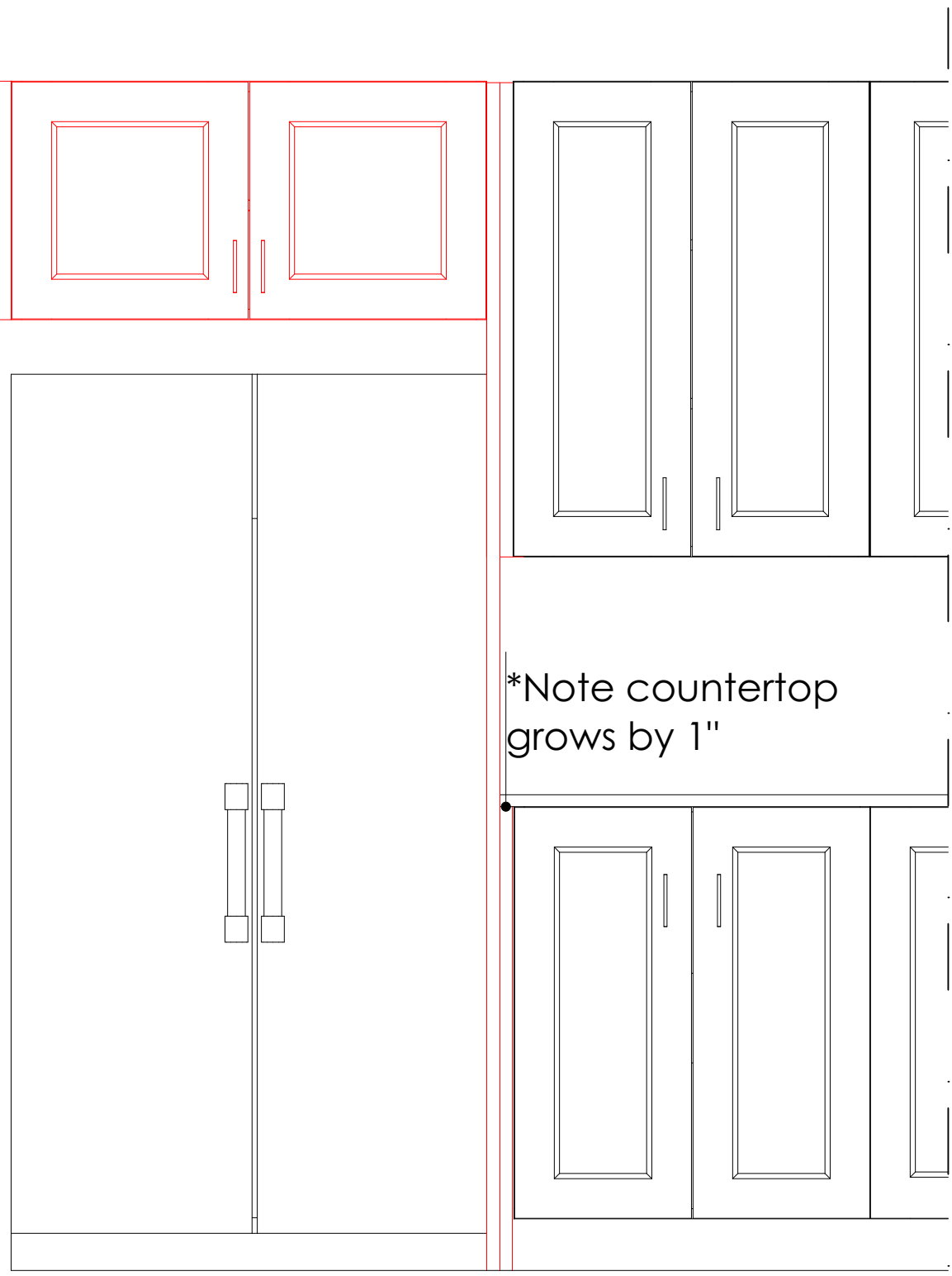


View B

Owner Option 1 - add fridge panels and 24" deep cabinet over fridge



Partial kitchen plan



Kitchen view A



Contact Info: +1 (828) 523-1588 / info@catana-homes.com



CATANA HOMES

Disclaimer: Renderings are the artist's concept and may show upgraded or optional features not included with the standard design. The floor plan may be mirrored and purchaser agrees to accept the same. Steps and porches may vary at any exterior entrances due to grading variance. Dimensions, specifications, and architectural detailing are subject to minor modifications. Indicated square footage may vary, and may include open-to-above or open-to-below space. The final location of the sump pump is based on site conditions, building code, and zoning. Roofline and adjoining model types may vary due to siting. E. & O.E. APRIL 2025
ORAL REPRESENTATIONS CANNOT BE RELIED UPON AS CORRECTLY STATING REPRESENTATIONS OF THE DEVELOPER. FOR CORRECT REPRESENTATIONS, MAKE REFERENCE TO HIS BROCHURE AND TO THE DOCUMENTS REQUIRED BY SECTION 718.503, FLORIDA STATUTES, TO BE FURNISHED BY A DEVELOPER TO A BUYER OR LESSEE. Catana Construction Inc. reserves the right to alter home specifications, options, or prices without notice or obligation. Nothing herein shall constitute an offer to sell or a solicitation of offers to buy in states in which such offers or solicitations cannot be made; prices and availability are subject to change.

RENDER

The MAPLE

Two floors | Attached Two-Family Home (Duplex)
ACSF 1,349 SQFT | 3 BED | 2.5 BATH | 1 CAR



Contact Info: +1 (828) 523-1588 / info@catana-homes.com



CATANA HOMES

Disclaimer: Renderings are the artist's concept and may show upgraded or optional features not included with the standard design. The floor plan may be mirrored and purchaser agrees to accept the same. Steps and porches may vary at any exterior entrances due to grading variance. Dimensions, specifications, and architectural detailing are subject to minor modifications. Indicated square footage may vary, and may include open-to-above or open-to-below space. The final location of the sump pump is based on site conditions, building code, and zoning. Roofline and adjoining model types may vary due to siting. E. & O.E. APRIL 2025
ORAL REPRESENTATIONS CANNOT BE RELIED UPON AS CORRECTLY STATING REPRESENTATIONS OF THE DEVELOPER. FOR CORRECT REPRESENTATIONS, MAKE REFERENCE TO HIS BROCHURE AND TO THE DOCUMENTS REQUIRED BY SECTION 718.503, FLORIDA STATUTES, TO BE FURNISHED BY A DEVELOPER TO A BUYER OR LESSEE. Catana Construction Inc. reserves the right to alter home specifications, options, or prices without notice or obligation. Nothing herein shall constitute an offer to sell or a solicitation of offers to buy in states in which such offers or solicitations cannot be made; prices and availability are subject to change.